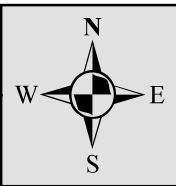
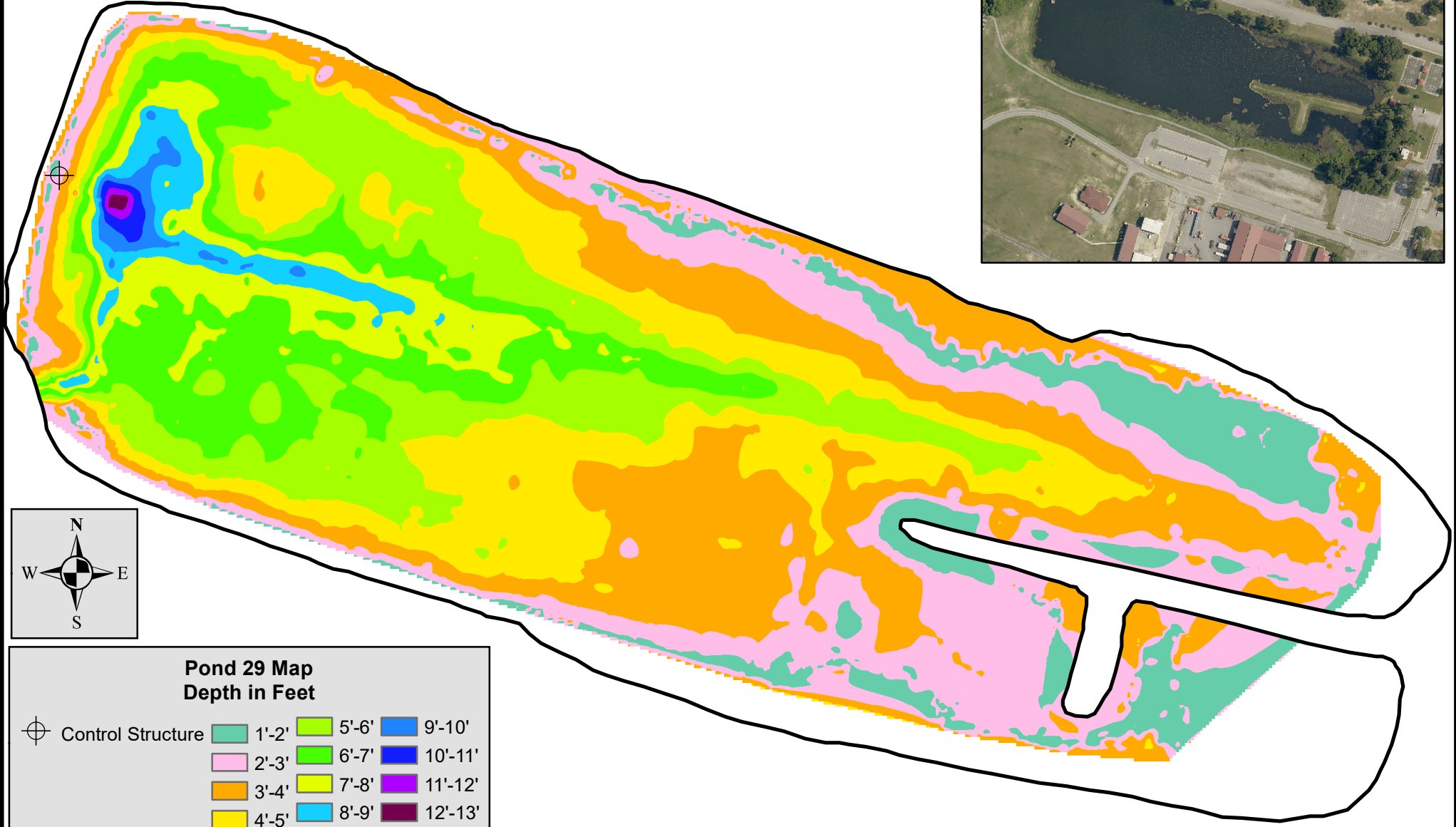


# POND 29 OGLETHORPE POND

**Pond 29 Info**  
Surface Acres: 10  
Average Depth: 3.8'  
Max Depth: 12.5'  
Training Area: HAAF  
Year Constructed:  
1983



**Pond 29 Map**  
Depth in Feet

	Control Structure		1'-2'		5'-6'		9'-10'
	2'-3'		6'-7'		10'-11'		11'-12'
	3'-4'		7'-8'		8'-9'		12'-13'
	4'-5'						

