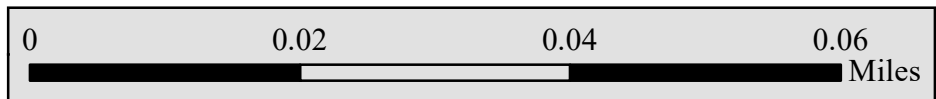
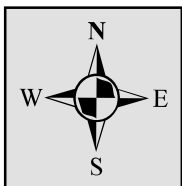
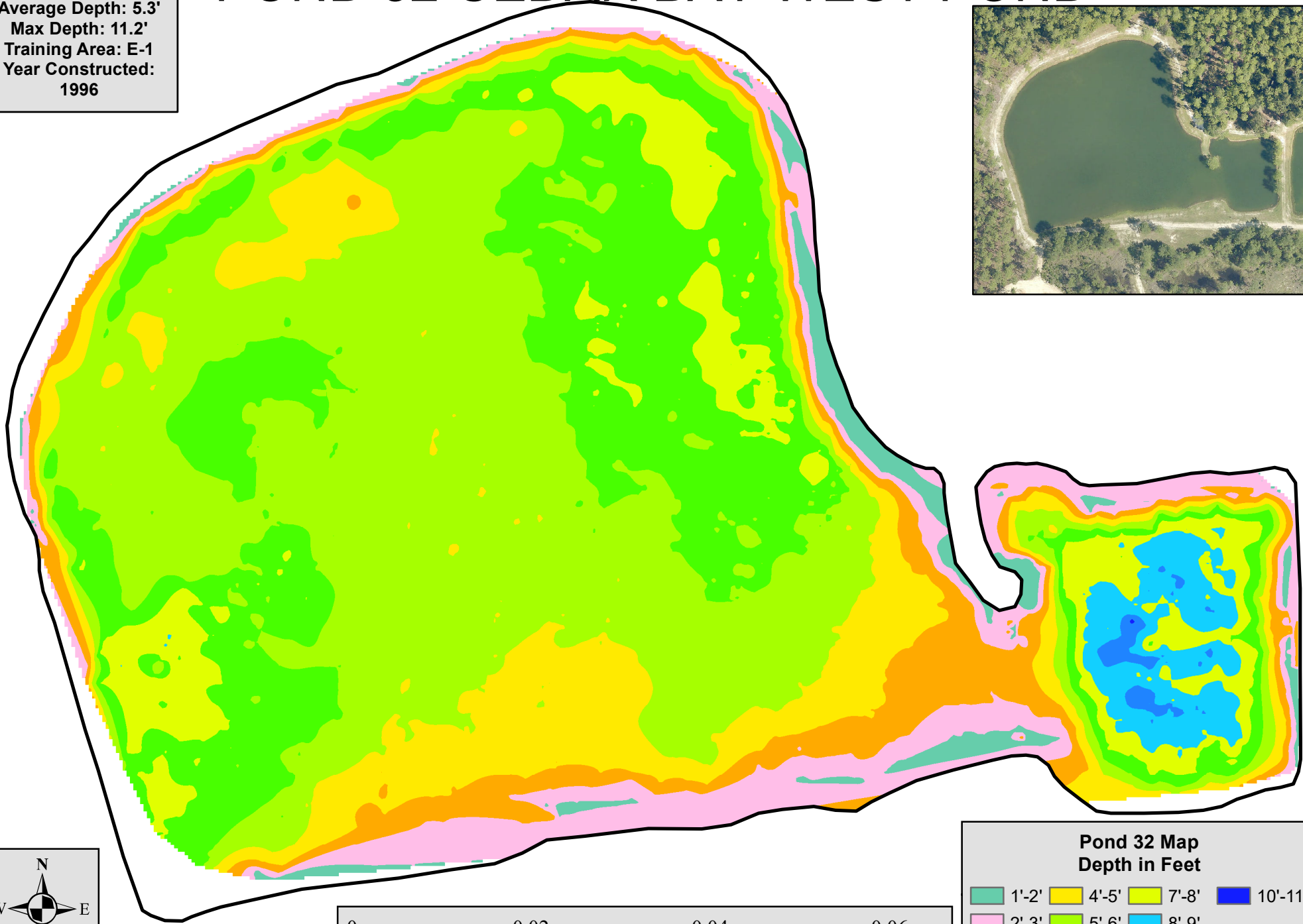


**Pond 32 Info**  
Surface Acres: 5.9  
Average Depth: 5.3'  
Max Depth: 11.2'  
Training Area: E-1  
Year Constructed:  
1996

# POND 32 CEDAR BAY WEST POND



1'-2'	4'-5'	7'-8'	10'-11'
2'-3'	5'-6'	8'-9'	
3'-4'	6'-7'	9'-10'	