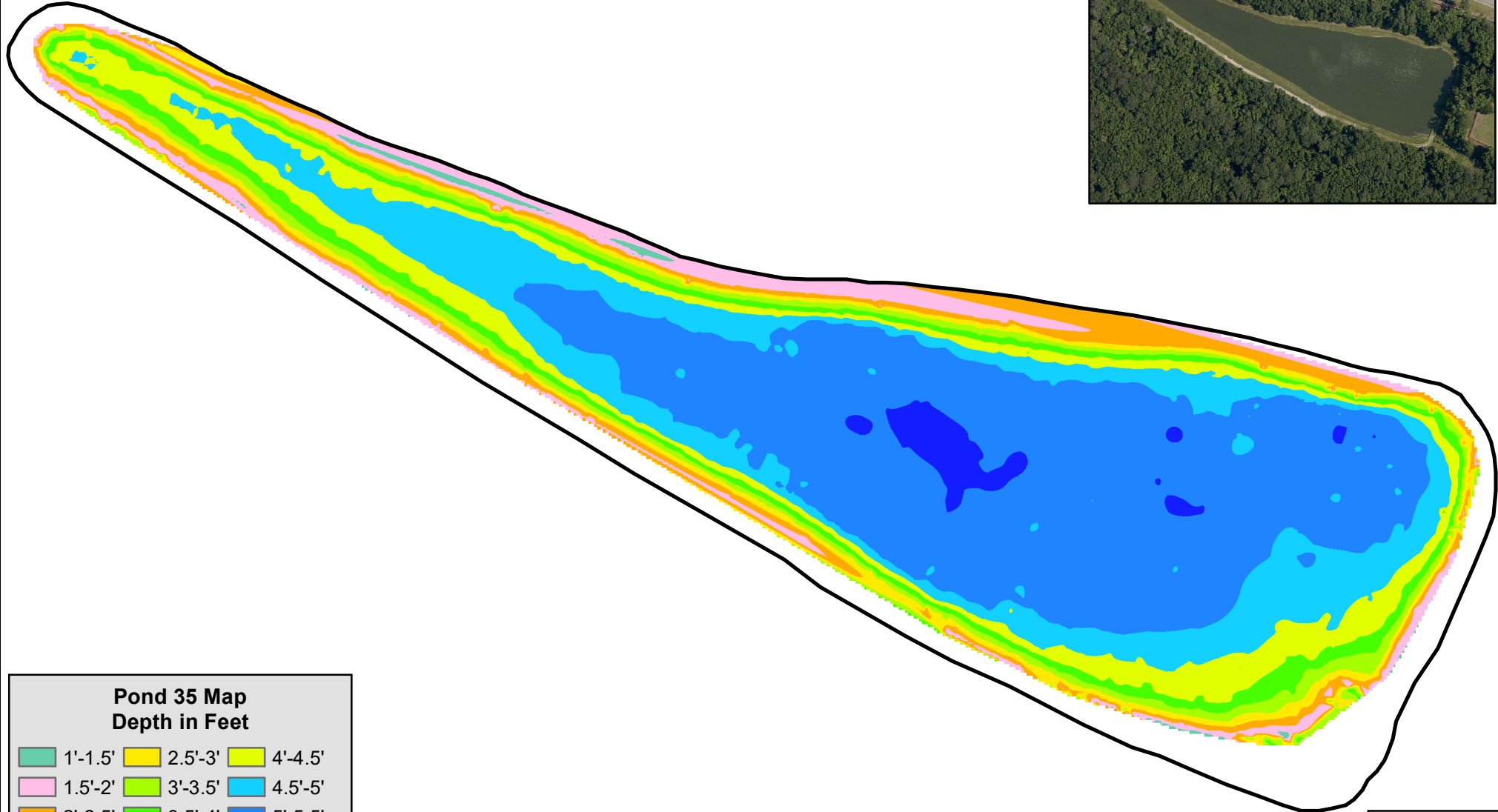


POND 35 WILSON GATE POND

Pond 35 Info
Surface Acres: 5
Average Depth: 3.7'
Max Depth: 6.1'
Training Area: H-7
Year Constructed:
1998



Pond 35 Map Depth in Feet

1'-1.5'	2.5'-3'	4'-4.5'
1.5'-2'	3'-3.5'	4.5'-5'
2'-2.5'	3.5'-4'	5'-5.5'
		5.5'-6.1'

0 0.03 0.06 0.09 Miles

