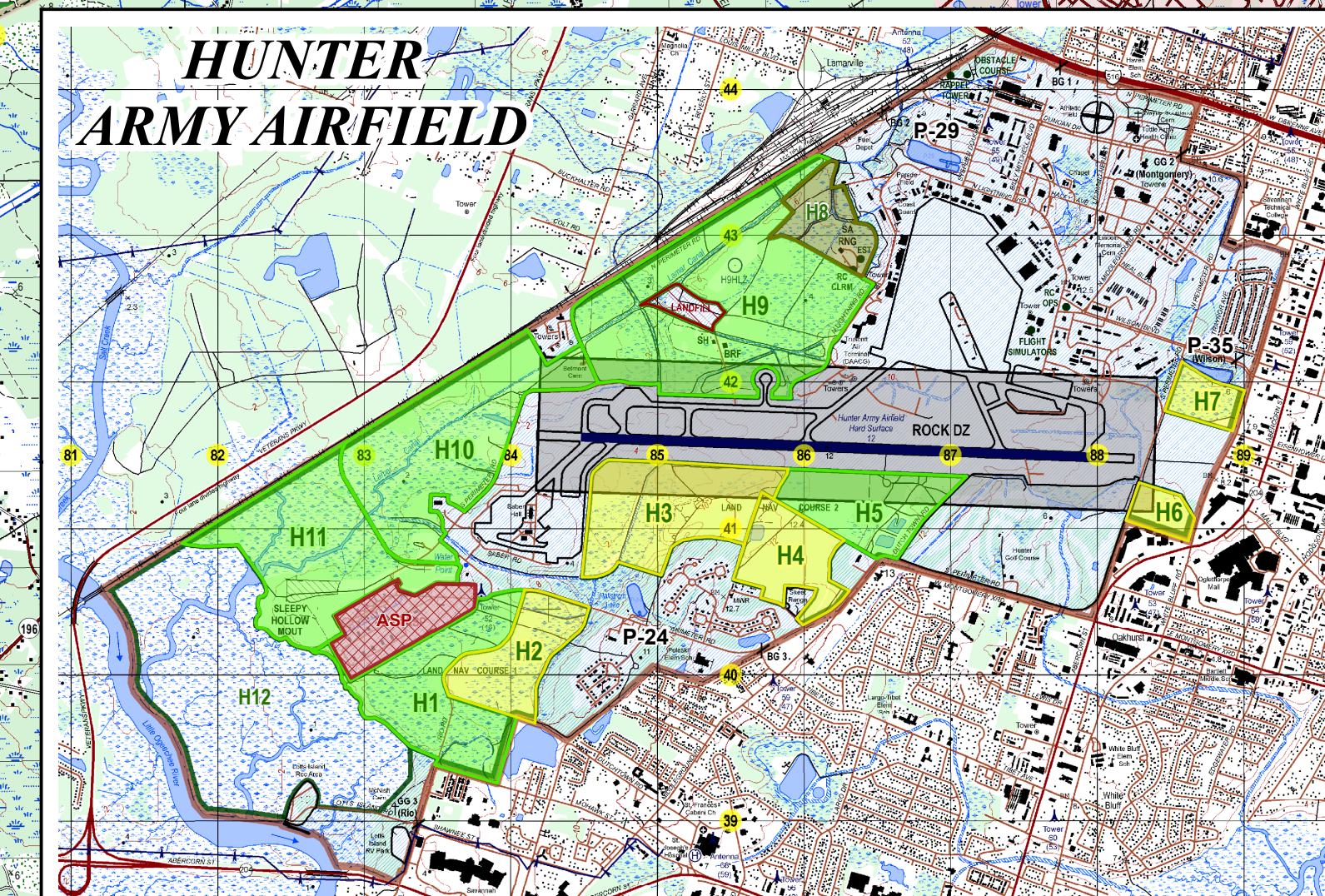
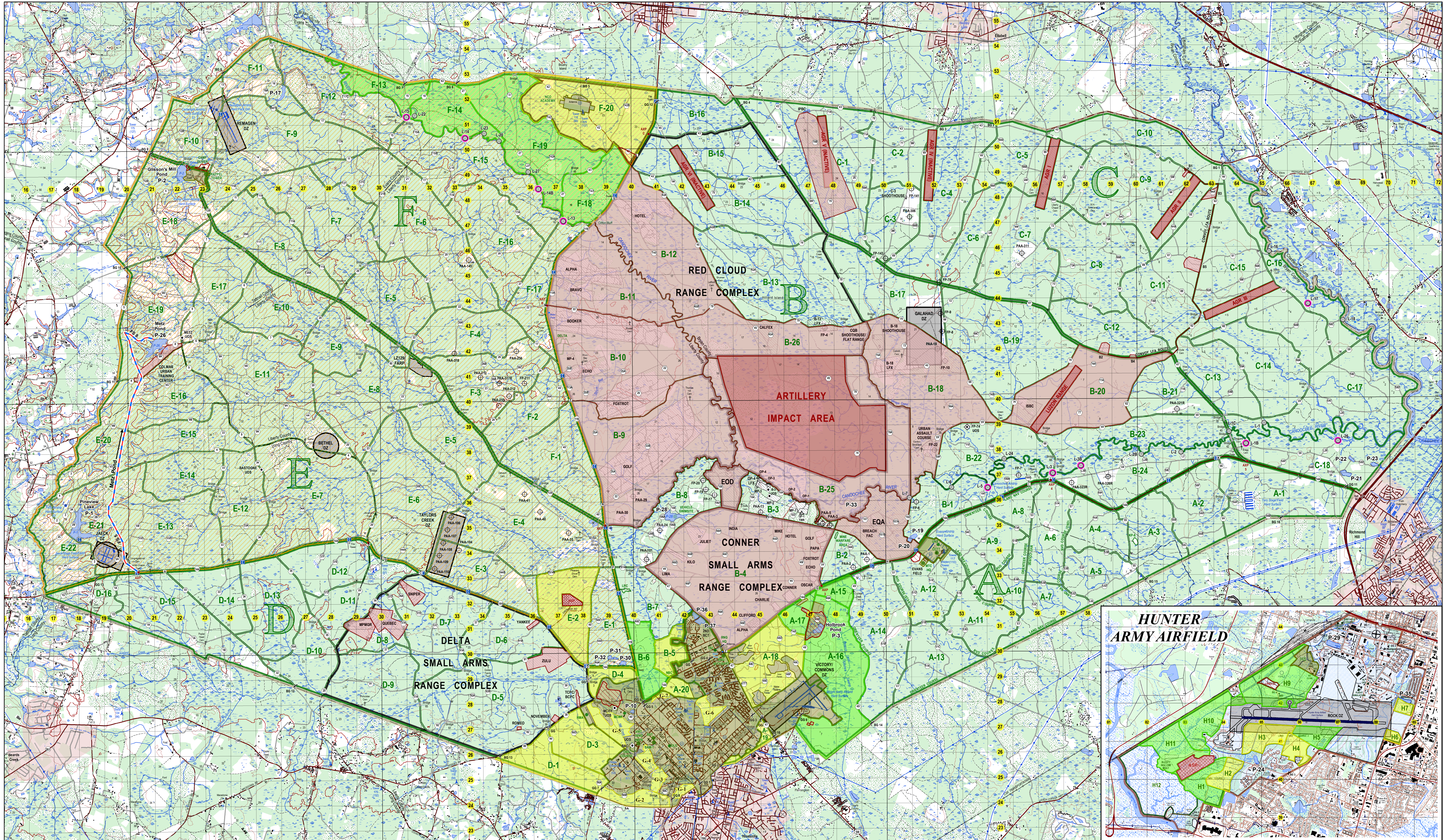


HUNTING AND FISHING MAP

FORT STEWART, GA



LEGEND

MILITARY LEGEND

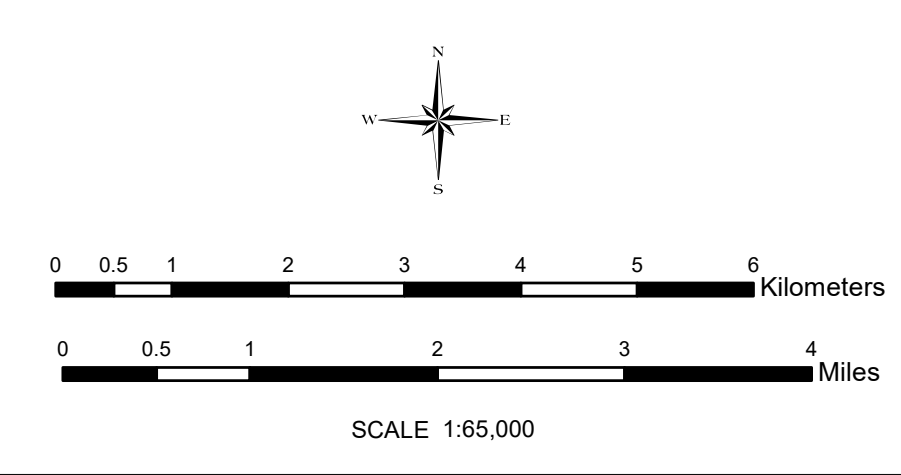
- ACCESS CONTROL POINT
- AMBULANCE EXCHANGE POINT
- AMMUNITION STORAGE AREA
- CANTONMENT
- DROP ZONE / LANDING ZONE
- EMERGENCY CALL BOX
- FIRING POINT (ARTILLERY / MORTAR)
- FIRING RANGE
- IMPACT AREA (DOTTED)
- LANDING
- OBSERVATION POINT
- RANGE COMPLEX
- RESTRICTED AREA
- TANK CROSSING
- TRAINING AREA (OVERALL)
- TRAINING AREA BOUNDARY
- TRAINING SITE
- URBAN OPERATIONS SITE (UOS)
- WATER SUPPLY POINT

Hunting & Fishing Legend
(As of October 2020)

Color Code for Hunting

- No Access (\$500 Fine)
- No Hunting
- Archery Only
- Shotgun, Muzzle Loader and Archery Only
- Quality Deer Management Zone

Refer to the Hunting and Fishing SOP to get a list of the managed ponds where frog gigging and waterfowl hunting is authorized.



Archery Areas [Yellow]
A-18, A-19, A-20, B-5, D-1, D-3, D-4, E-2, F-20, G 1-7
H-2, H-3, H-4, H-6, H-7 (HAAF)

Shot Gun Areas [Green]
A-15, A-16, A-17, B-6, F-13, F-14, F-18, F-19
H-1, H-5, H-9, H-10, H-11 (HAAF)

QDMZ
All E and F training areas

PONDS

Pond 1	Pond 26
Pond 2	Pond 29
Pond 3	Pond 29
Pond 5	Pond 29
Pond 10	Pond 30
Pond 17	Pond 31
Pond 19	Pond 32
Pond 20	Pond 33
Pond 21	Pond 35
Pond 22	Pond 36
Pond 23	Pond 37
Pond 24	

LANDINGS

L-1 [C-17]	L-14/14B [F-15]
L-15/C [C-18]	L-15 [F-12]
L-2/2B [B-24]	L-16/17/18 [C-16]
L-3 [B-1]	L-20/22/23 [F-14]
L-3B [B-24]	L-24 [B-22]
L-5/6 [B-1]	L-26 [C-18]
L-7 [EQA]	L-27 [F-19]
L-13 [F-17]	

Concrete Landing



"If you did not drop it, do not pick it up!"

Report Unexploded Ordnance to Range Control 435-8184/8777