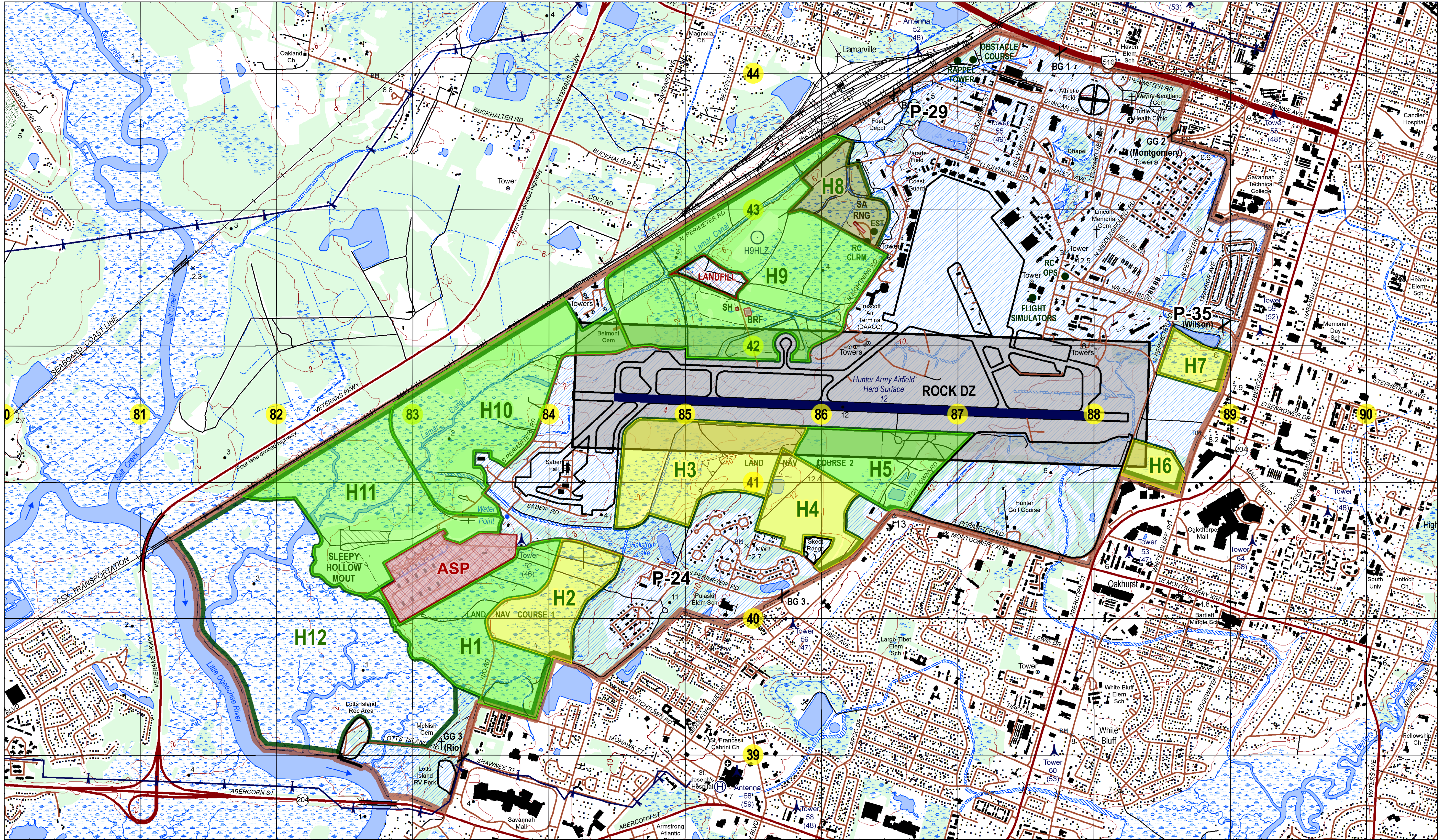


HUNTING AND FISHING MAP

HUNTER ARMY AIRFIELD, GA



LEGEND

ROADS

- Interstate Highway with shield
- State Route
- County Route
- Local Road
- Unimproved Road
- Right-of-Way
- Utility Line
- Power Line
- Water Line
- Gas Line
- Telephone Line
- Other Utility Line

RAILROADS

- Passenger Train
- Freight Train
- Light Rail
- Tram

BRIDGES

- Arch Bridge
- Beam Bridge
- Truss Bridge
- Cable-stayed Bridge
- Other Bridge

WATERWAYS

- Stream
- Canal
- Swamp
- Wetland
- Marsh
- Bayou
- Other Waterway

WATERWAYS CULTURAL FEATURES

- Historic Site
- Monument
- Other Cultural Feature

OBSTACLES

- Obstacle Course
- Other Obstacle

VEGETATION

- Forest
- Field
- Other Vegetation

MILITARY LEGEND

- AMMUNITION STORAGE AREA
- CANTONMENT / RECREATION
- DROP ZONE (DZ)
- FIRING RANGE
- RESTRICTED AREA
- TRAINING AREA
- GATE
- LANDING ZONE (LZ)
- TRAINING SITE

Hunting & Fishing Legend
(As of October 2020)

- No Access (\$500 Fine)
- Color Code for Hunting
- No Hunting
- Archery Only
- Shotgun, Muzzle Loader and Archery Only

Refer to the Hunting and Fishing SOP to get a list of the managed ponds where frog gigging and waterfowl hunting is authorized.

Scale: 1:12,000

0 0.25 0.5 1 Miles

0 0.25 0.5 1 Kilometers

ARCHERY AREAS (Yellow)

H-2, H-3, H-4, H-6, H-7

SHOTGUN AREAS (Green)

H-1, H-5, H-9, H-10, H-11

PONDS

- Pond 24 [Cantonment]
- Pond 29 [Cantonment]
- Pond 35 [Cantonment]



"If you did not drop it, do not pick it up!"

Report Unexploded Ordnance to Range Control
435-8184/8777